

Newsletter

816-531-2600
816-531-2754 (FAX)
EMAIL: GKCP@KC.RR.COM
WEBSITE: WWW.GKCPSA.ORG

Let the Institute know if you have items or information (about programs, people, publications, achievements, problems, etc.) that are of interest and could be included in the newsletter.

Congratulations

We ended the academic year, 2005-2006, with the graduation of five candidates: Marilyn Dawson-McCarthy, MSW; Lisa Doane, M.D.; Michael Lubbers, Ph.D.; Jorden Weiss, D.O.; and John Whipple, M.D. and one psychotherapy student, Robin Onikul, D.D.S. Each of these outstanding individuals has had a major impact on our Institute and psychoanalytic community in his and her unique ways. We look forward to long post graduation collaborations with all of you and feel great pride at being associated with you and your achievements!

Congratulations are also in order for Susan Bearce, Psy.D.; Nancy Crawford; Mary Frank, M.D.; Richard Hale, Ed.,D; Mari Hayes, Ph.D.; Robin Onikul, D.D.S.; Timothy Post, Psy.D.; Deana Schuplin, PCC, and Barbara Teter members of our new candidate class beginning this fall! They are a widely divergent, stimulating, enthusiastic, and engaging group. We are very pleased to have you join us!

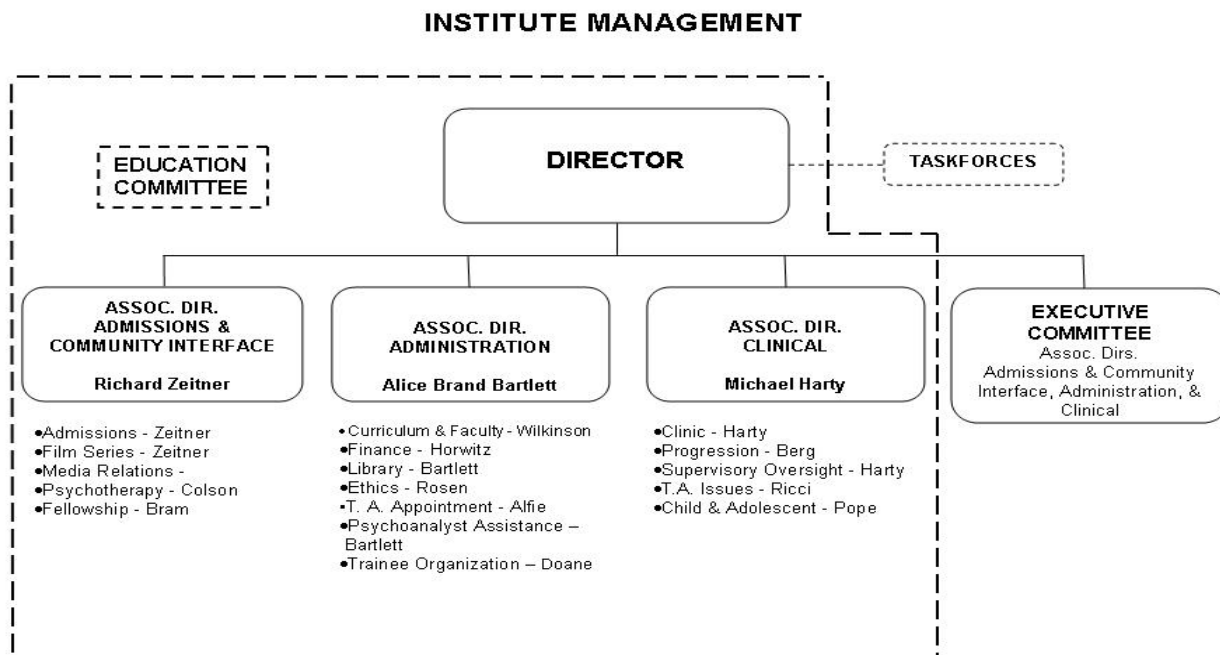
Director's Report

We have had a busy academic year.

- Our Annual Retreat, held on November 12 & 13, 2005, at the Hotel Phillips was well attended. We completed a list of priorities and spent the remainder of the year attending to most of them.
- The Institute has a reorganized administrative structure which includes an executive committee and enlarged Education Committee (EC) in which all members, training analysts, faculty members, and candidates alike, have committee responsibilities. More work goes on in the committees so the EC meets less frequently. We have increased our communication via phone conferencing and email. Along with the reorganization there were several new committee chair appointments. Please see the organization chart on page 2.
- The inaugural season of our film series "Searching the Psyche Through Cinema" in collaboration with the Kansas City Art Institute and UMKC was a big success thanks to the efforts of many. Attendance for all four films averaged about 100. Hopefully, there will be many more seasons.
- The Greater Kansas City-Topeka Psychoanalytic Center held its Annual Dinner on April 1, 2006 complete with entertainment, a skit written by Irv Rosen entitled "Is Freud Relevant? I Always Thought he was Jewish?" and performed by members and friends of the Center.
- A series of lectures was requested and provided for the psychiatric residents of UMKC and negotiations are in process to continue and expand that effort.
- The Kansas City and Topeka Psychoanalytic Societies formally merged to become the Greater Kansas City-Topeka Psychoanalytic Center.
- A Balint Group has been organized and is meeting the 1st & 3rd Wednesday of each month. There are currently 7 physicians in the group. Manuel Morales, M.D. is the facilitator.

COMING EVENTS

- Sept. 8 — *Psychoanalytic classes start*
- Sept. 9 — *Psychotherapy classes start*
- Sept. 16 — *Supervision Workshop*
- Oct. 14, 21, 28 — *Group Psychotherapy Program*
- Oct. 17 — *Center Scientific Meeting (Dr. Irwin Rosen)*
- Nov. 11 & 12 — *Institute Retreat & Site Visit (Hotel Phillips)*
- Nov. 21 — *Center Scientific Meeting (Dr. Sallye Wilkinson)*



Announcements

- As of June 1, 2006, the official address of the Greater Kansas City Psychoanalytic Institute is:
411 Nichols Road, Suite 194
Kansas City, MO 64112
Phone: 816-531-2600
Fax: 816-531-2754

Email and website addresses remain the same. Several locations for candidate and psychotherapy classes are under consideration with a decision forthcoming this summer.

- Meeting time for candidate classes will be changing to Friday afternoons as the new class begins this fall. The second year class of the Psychoanalytic Psychotherapy Training Program will continue to meet on Saturday mornings at a location also soon to be determined.

In Focus

Our faculty, graduates, candidates, and students continue to make public presentations that advance psychoanalytic ideas and bring favorable notice to the Institute. In recent weeks:

- Richard Zeitner, Ph.D. was co-chair of a discussion group on “Psychoanalytic Family Therapy” at the January & June American Psychoanalytic Association meeting.
- Peter Graham, Ph.D. presented “Practicing What We Preach: Mind-Body Health & Colleague Assistance” at the Kansas Psychological Association conference in November.
- Peter Graham, Ph.D. was interviewed in April on AM1310 in Lawrence, KS for the Kansas Psychological Association public education campaign focused on mind, body, and health.
- Stephen Sirridge, Ph.D. presented “The Land of Odds: Parenting the Teen Tornado” at the 2005 fall conference of The Greater Kansas City Psychological Association.
- Leonard Horwitz, Ph.D. was co-chair of a discussion group on “How Scientific is Psychoanalysis” at the January American Psychoanalytic Association meeting.
- Ira Stamm, Ph.D. presented “Portrait of a Healthcare System in Continuous Transition” and “Ethical Vignettes with the Difficult Patient and Family” at the Kansas Psychological Association conference in November.
- Current Trends in Group Psychotherapy — Bonnie Buchele, Ph.D. and Stephen Sirridge, Ph.D. participated in the panel discussion held at UMKC on April 1, 2006.
- Beverly Wilson James, M.D. was recently married.

Publications

- Leonard Horwitz, Ph.D. “40 Years of Group Psychotherapy at the Menninger Clinic” in the International Journal of Group Psychotherapy (2006).
- Mike Harty, Ph.D. responded to an article in the Kansas City Star (March 21, 2006) “Hey, Hey, Hey, Goodbye. If only it were that easy to end it with your therapist”.
- Michael Lubbers, Ph.D. provided an update on the activities of the Greater Kansas City Psychoanalytic Institute in The Affiliate Council Newsletter (January 2006).